

SLICK ECO LED HE

SLICK AGRO LED HE

SLICK LED

SLICK STANDARD

SLICK LED PC/SMC

LED LUMINAIRES DESIGNED FOR INDUSTRIAL FACILITIES



# INSPIRED BY THE DEMAND CREATED FOR SOLUTIONS



SLICK ECO LED HE is the best solution for illuminating workshops, technical premises, and small warehouses.

The SLICK ECO LED HE luminaire design was created specially for LED application. Die cast aluminum body provides the best thermal management and long life time for LED.

Wieland connector and mounting clips provide simplicity of connection and ease of installation at any project!

SLICK PRS ECO LED HE /E/ approved to be used in food applications.

**Food regulatory declaration of conformity**

The types of as explained below:

**SLICK PRS ECO LED HE /E/**

Manufactured by: LLC "Lighting Technologies LLC"



11, bul. A, Magistralnaya Str.,  
390010, Ryazan, Russia

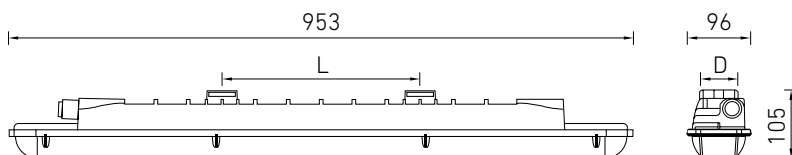
*fulfill the requirements of food law within the meaning of Regulation (EC) No 853/2004 (WACCP) Annex II chapter I point 2 a; 0 chapter II point 1c in the specialist area of luminaires at the moment of their evaluation.*

*This was reviewed of 20.03.2020. At Lighting-Technologies Slick PRS ECO HE-04-20 by the expert office Stefan Tannenberg, Langenscheidt, 35, 56070 Koblenz (Chamber of Commerce and Industry) Koblenz officially authorized and sworn expert for production hygiene and product hygiene of the food sector.*

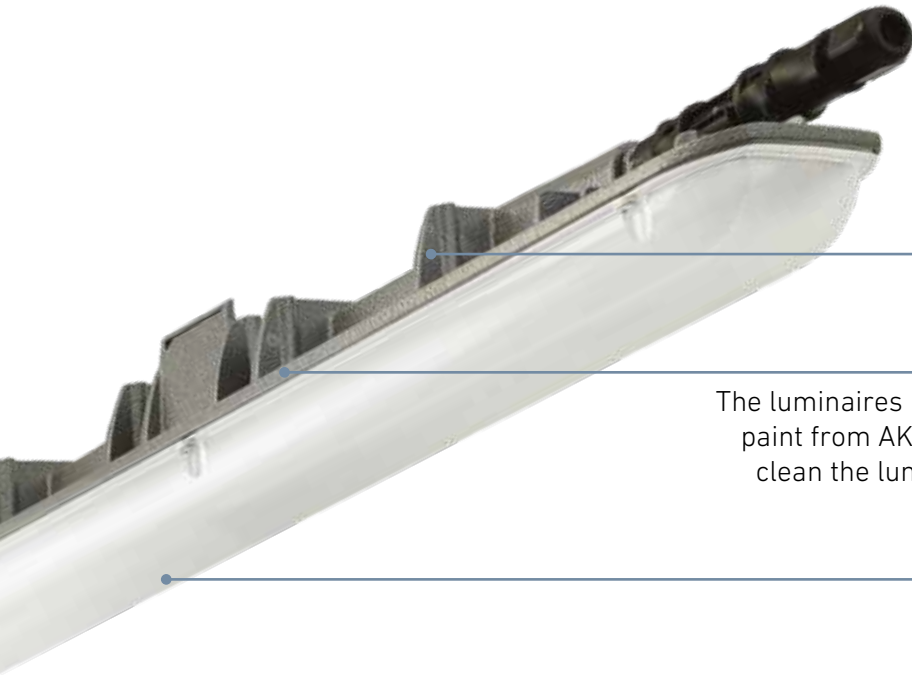
*The DECLARATION of CONFORMITY is valid until 03.04.2023 for the above mentioned models where the types have not been changed to date.*



*The manufacturer is responsible for the above mentioned products. The expert office Tannenberg is not liable, even not against third parties, insufficient product quality, product defects, insufficient expectations or damages, which may occur by using this luminaire. It is not allowed to copy or edit the food regulatory declaration of conformity or send them to third parties.*





**P**ERFECT TECHNOLOGY

**High- efficient heat removal system**

**Durable casing of die-cast aluminum**

The luminaires housings are painted with RX 4049 Hammerite paint from AKZO NOBEL company. This will make it easier to clean the luminaire due to a smoother housing surface and increase mechanical resistance

**Maximum power in minimum dimensions**

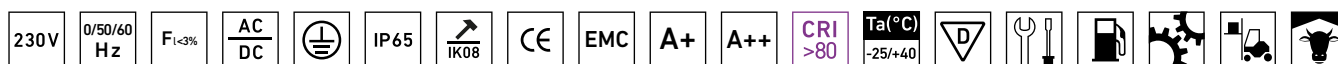
**Microprismatic diffuser of polycarbonate**

High mechanical stability and excellent lighting characteristics





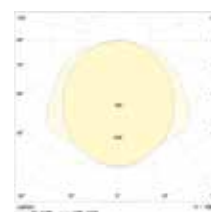
## SPECIFICATIONS



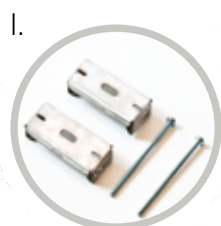
- Lighting efficiency: up to 158 lm/W
- 3 power consumption options: 30/41/52W
- Luminous flux from 4100 lm up to 7700 lm
- CRI ≥ 80
- Color temperature: 4000K, 5000K
- Light weight housing and compact dimensions
- Modifications with control via 1-10V (HFR), DALI (HFD)
- AC/DC, possibility of connection to central emergency lighting system
- Modifications with built-in 1 hour (EM) and remote 3 hours emergency unit (EM3) on request

- Through wiring is available by request
- L80B20 – 50000 hours
- Temperature range: -25...+40°C
- Opal diffuser on request available

SLICK PRS ECO LED 45 5000K HE



Name	lm	W	lm/W	Kg	Code	PFC
SLICK.PRS ECO LED 30 4000K HE /E/	4100	30	137	2,5	1997031300	≥ 0,96
SLICK.PRS ECO LED 30 5000K HE /E/	4400	30	147	2,5	1997031310	≥ 0,96
SLICK.PRS ECO LED 45 4000K HE /E/	6100	40	153	2,5	1997031320	≥ 0,96
SLICK.PRS ECO LED 45 5000K HE /E/	6300	40	158	2,5	1997031330	≥ 0,96
SLICK.PRS ECO LED 60 4000K HE /E/	7500	52	144	2,5	1997031360	≥ 0,96
SLICK.PRS ECO LED 60 5000K HE /E/	7700	50	154	2,5	1997031370	≥ 0,96



I. BRACKET FOR EXTRA FIXATION OF SLICK LUMINARIES (SET) /E/	2997000510
II. ANTI-VIBRATION BRACKETS FOR SLICK ECO LED /E/	2631000110
III. WALL/CEILING ROTARY BRACKETS SLICK ECO LED /E/	2631000120

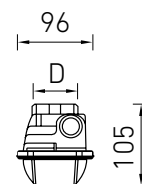
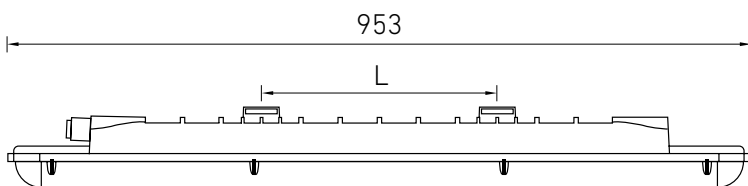


## INSPIRED BY THE DEMAND CREATED FOR SOLUTIONS



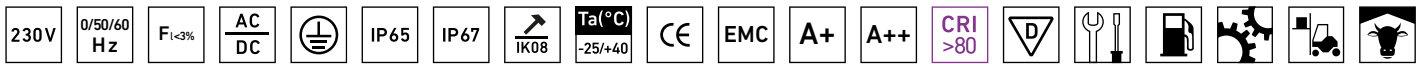
SLICK.PRS AGRO LED HE is designed for livestock farms.

- Best thermal management and long life time for LEDs with diecast aluminum body
- High efficient and ammonia resistant ABS plastic diffusor
- Easy mounting and electrical connecting with stainless steel brackets and Wieland connectors
- Special modifications with IP67 (are available by request)

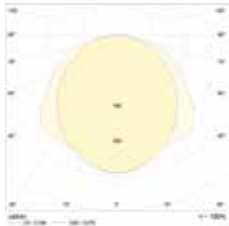




## TECHNICAL FEATURES



**SLICK.PRS AGRO LED 45 5000K**



- Lighting efficiency: up to 154 lm/W
- 4 power consumption options: 18/30/41/52 W
- Luminous flux from 2300 lm up to 7700 lm
- Special modification SLICK.PRS AGRO LED 18 xxxxK with low power consumption for Pig farms
- Modification with control via 1-10V (HFR), DALI (HFD)
- Different color temperatures: 4000/5000K
- Modifications with built-in 1 hour (EM) and remote 3 hours emergency unit (EM3) on request
- Throughwiring is available by request
- L80B20 – 50000 hours

Name	lm	W	lm/W	Kg	Code	PFC
SLICK.PRS AGRO LED 18 4000K HE /E/	2600	18	144	2,5	1997035370	≥ 0,96
SLICK.PRS AGRO LED 18 5000K HE /E/	2500	17	147	2,5	1997035380	≥ 0,96
SLICK.PRS AGRO LED 30 4000K HE /E/	4100	30	137	2,5	1997035390	≥ 0,96
SLICK.PRS AGRO LED 30 5000K HE /E/	4300	30	143	2,5	1997035400	≥ 0,96
SLICK.PRS AGRO LED 45 4000K HE /E/	6100	41	149	2,5	1997031280	≥ 0,96
SLICK.PRS AGRO LED 45 5000K HE /E/	6300	40	158	2,5	1997031290	≥ 0,96
SLICK.PRS AGRO LED 60 4000K HE /E/	7500	52	144	2,5	1997035420	≥ 0,96
SLICK.PRS AGRO LED 60 5000K HE /E/	7700	50	154	2,5	1997035430	≥ 0,96



## CHOICE OF PROFESSIONALS

### MODERN INDUSTRIAL LUMINAIRE



The luminaire SLICK LED G2 has the possibility to change the LED module during maintenance. SLICK LED G2 is another good solution for illuminating workshops, technical premises, underroof parking lots, and small warehouses.

Designed to replace former conventional luminaires with fluorescent lamps.



SLICK LED G2 with driver box



SLICK LED G2 with driver box/ tempered glass



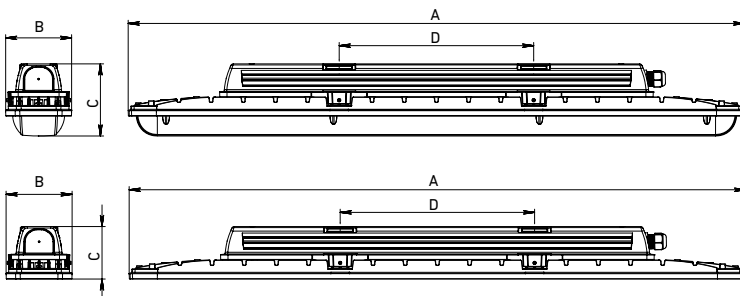
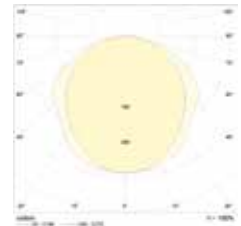


# MAIN ADVANTAGES



- Luminous efficiency up to 155 lm/W
- CRI≥80
- Color temperature 4000K, 5000K
- Translucent micro prism diffuser. As an option, the luminaires can be supplied with a clear tempered glass (SLICK.PRS LED xx xxx/Tempered glass)
- Die-cast aluminum housing with hammer coating
- Built-in emergency unit is optional
- L80B20 – 50 000 hours

SLICK.PRS LED 50  
5000K



	A	B	C	D
SLICK.PRS LED 20/30/50/60 with driver box	955	105	115	302
SLICK.PRS LED 20/30/50/60 with driver box /tempered glass	960	105	85	302





## TECHNICAL FEATURES

Name	lm	W	lm/W	Kg	Code	PFC
SLICK.PRS LED 20 with driver box 4000K /E/	3100	22	141	2,5	1997026910	≥ 0,95
SLICK.PRS LED 20 with driver box 5000K /E/	3400	20	170	2,5	1997026750	≥ 0,95
SLICK.PRS LED 30 with driver box 4000K /E/	4100	30	137	2,9	1997026920	≥ 0,95
SLICK.PRS LED 30 with driver box 5000K /E/	4400	30	147	2,9	1997026760	≥ 0,95
SLICK.PRS LED 50 with driver box 4000K /E/	7000	50	140	3,0	1997026930	≥ 0,95
SLICK.PRS LED 50 with driver box 5000K /E/	7200	50	144	3,0	1997026770	≥ 0,95
SLICK.PRS LED 60 with driver box 4000K /E/	7800	58	134	3,0	1997026940	≥ 0,95
SLICK.PRS LED 60 with driver box 5000K /E/	8200	58	141	3,0	1997026780	≥ 0,95
SLICK.PRS LED 20 with driver box /tempered glass/ 4000K /E/	3400	22	155	2,5	1997026990	≥ 0,95
SLICK.PRS LED 20 with driver box /tempered glass/5000K /E/	3800	20	190	2,5	1997026830	≥ 0,95
SLICK.PRS LED 30 with driver box /tempered glass/4000K /E/	4500	30	150	2,6	1997027000	≥ 0,95
SLICK.PRS LED 30 with driver box /tempered glass/5000K /E/	4800	30	160	2,6	1997026840	≥ 0,95
SLICK.PRS LED 50 with driver box /tempered glass/4000K /E/	7350	50	147	3,0	1997028520	≥ 0,95
SLICK.PRS LED 50 with driver box /tempered glass/5000K /E/	7150	50	143	3,0	1997026850	≥ 0,95
SLICK.PRS LED 60 with driver box /tempered glass/ 4000K /E/	8100	58	140	3,0	1997027010	≥ 0,95
SLICK.PRS LED 60 with driver box /tempered glass/ 5000K /E/	8500	60	143	3,0	1997026860	≥ 0,95



# COST EFFECTIVE SOLUTION

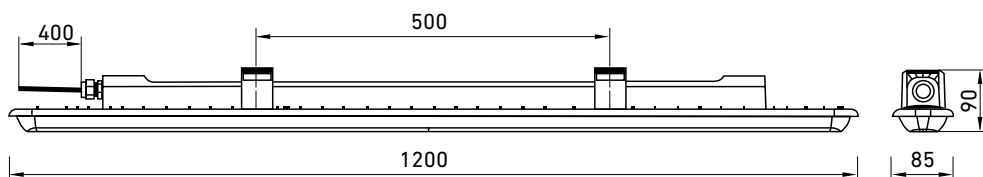
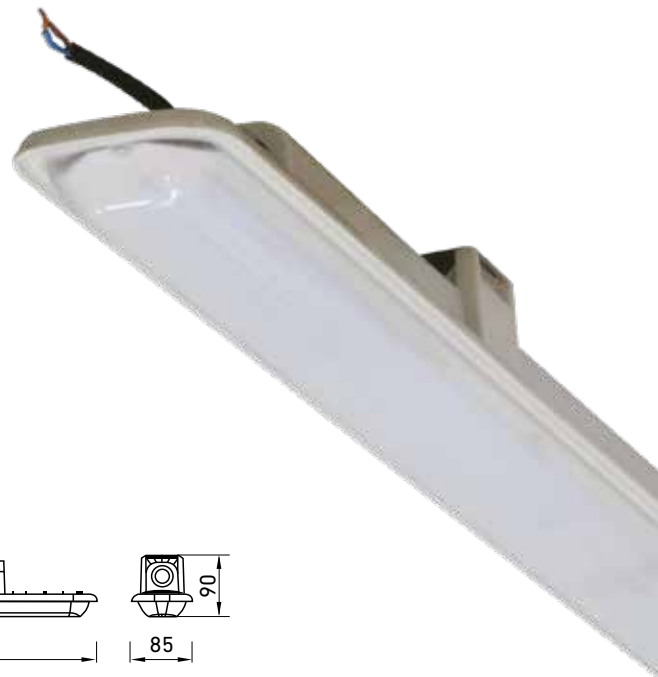
## IN A MODERN DESIGN



SLICK LED STANDARD perfect lighting solution for industrial facilities

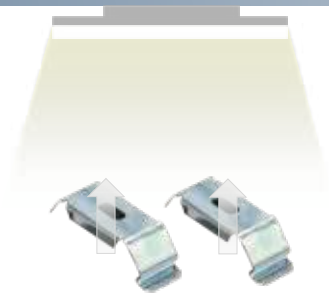
- Direct replacement of conventional luminaires
- Robust luminaire housing
- Transparent microprismatic diffuser
- Easy installation and electrical connection

Family of linear moist and dust protected luminaires for replacing of LSP 236 fluorescent tube luminaires. Are designed for installation at utility services rooms, workshops with ceilings up to 5 meters, covered arcades.

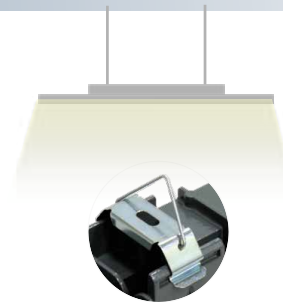




## EASY INSTALLATION



Mounting brackets are attached to the supporting surface, fixtures are inserted into staples tool-free



Suspended installation is possible using basic mounting kit

## EASY ELECTRICAL CONNECTION

- External electrical connection
- The luminaire is supplied with a 400 mm rubber insulated cable lead



T-shaped connector (loop connection)

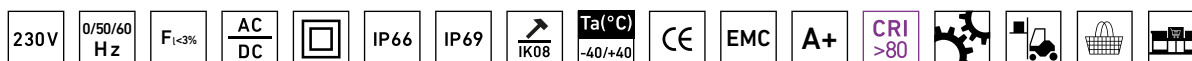


L-shaped connector (individual connection)



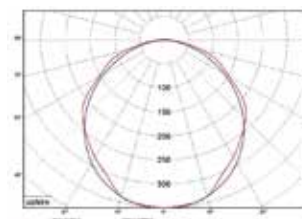


## TECHNICAL FEATURES



- Power consumption: 32 W
- Luminous efficiency: 119 lm/W
- Luminous flux: 3800 lm
- CRI $\geq$ 80
- Color temperature 4000 K, 5000 K
- Flickering <1%
- Protection from dust and moisture: IP66/IP69
- Impact resistance: IK08
- Electrical shock protection class: II
- Temperature range: -40 to +40 °C
- Connecting an external emergency unit CONVERSION KIT POWER LED, equipped with a protective box with IP65
- Optionally, the luminaires can be equipped with 1-10V or DALI controlled drivers

SLICK LED STANDARD



Name	lm	W	lm/W	Kg	Code	PFC
SLICK STANDARD 1200 4000K /E/	3700	31	116	1,75	1997035830	$\geq 0,96$
SLICK STANDARD 1200 5000K /E/	3800	32	119	1,75	1997035840	$\geq 0,96$



# PROFESSIONAL SOLUTION

IN A NEW FORM



**Direct replacement of convential luminaires**

The size of the luminaire is adapted to classic solutions

**Robust housing**

SMC housing (glass fiber reinforced polyester)

**Mechanical strength or chemical resistance**

Diffuser made of photo stabilized polycarbonate to provide IK08

**Easy mount**

Mounting the fixture directly on the surface of the ceiling or walls using mounting brackets (included in the delivery)





## EASY ELECTRICAL CONNECTION

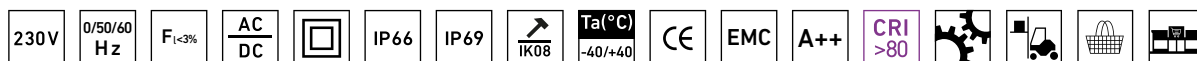
External electrical connection  
via Wieland connector





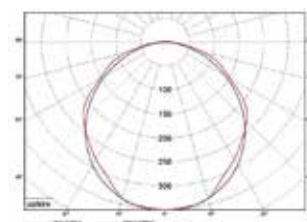


## TECHNICAL FEATURES



- Power consumption: 36 W
- luminous efficiency: up to 150 lm/W
- Luminous flux: 5400 lm
- CRI $\geq$ 80
- Color temperature 4000 K
- Flickering < 1%
- Protection from dust and moisture: IP66/69
- Class of protection against electric shock: II
- Temperature range: -40 to +40 °C
- Connecting an external emergency unit CONVERSION KIT POWER LED, equipped with a protective box with IP65
- Optionally, the luminaires can be equipped with 1-10V or DALI controlled drivers

SLICK LED PC/SMC



Name	lm	W	lm/W	Kg	Code	PFC
SLICK.PRS LED 35 (PC/SMC) 4000K /E/	5400	36	150	1,75	1997035850	$\geq 0,96$
SLICK.PRS LED 35 (PC/SMC) 5000K /E/	5400	36	150	1,75	1997035860	$\geq 0,96$



**Lighting Technologies Europe GmbH**  
Fraunhoferstrasse 7, 85737 Ismaning, Germany  
T +49 89 550 59 86 11  
eu.sales@LTcompany.com

**Lighting Technologies Europe GmbH**  
Alte Duisburger Strasse 11, 47119 Duisburg, Germany  
T +49 173 637 4552  
eu.sales@LTcompany.com



[www.LTcompany.com/en/](http://www.LTcompany.com/en/)