

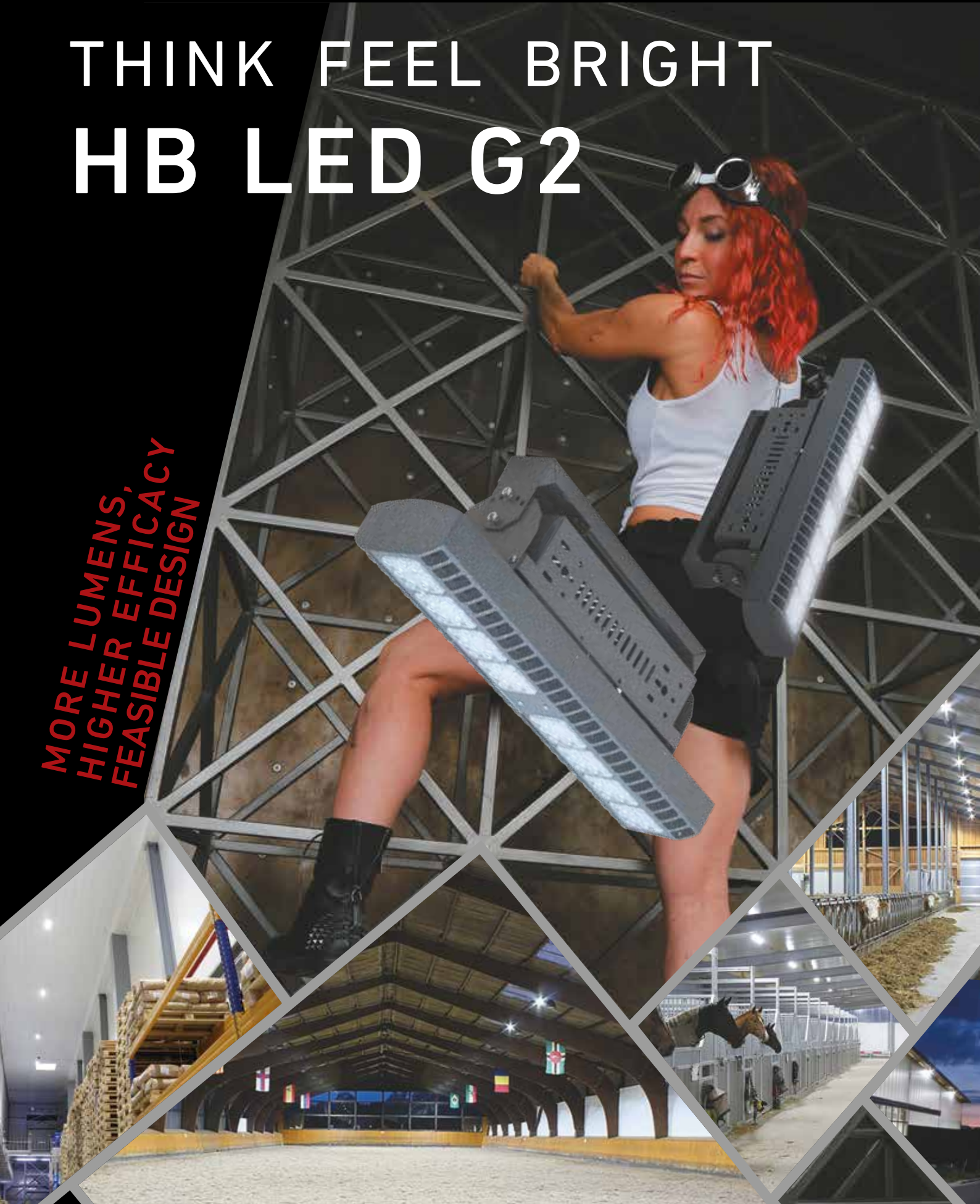


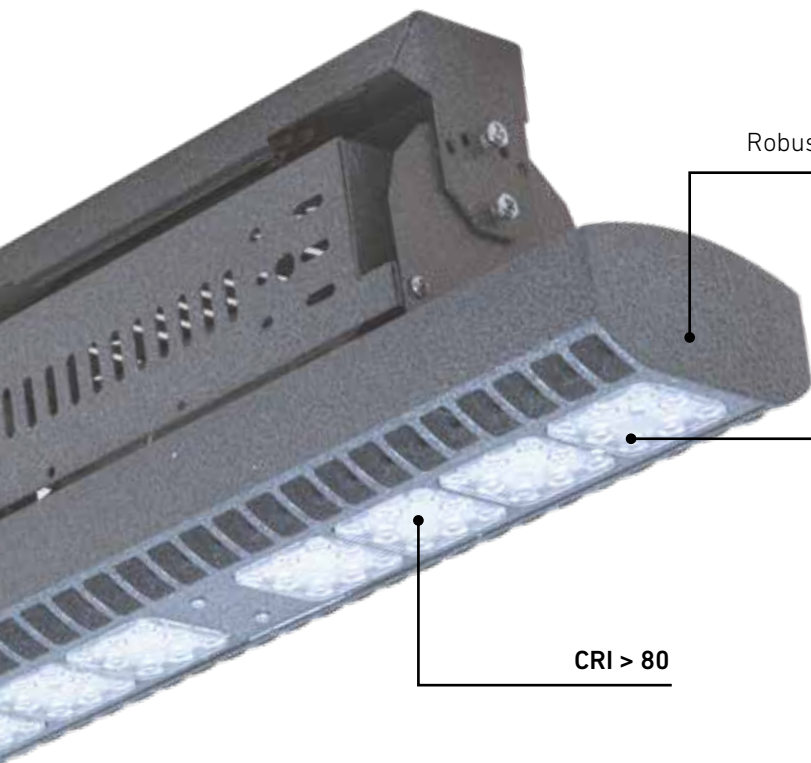
INDUSTRIAL

Lighting  
Technologies

# THINK FEEL BRIGHT HB LED G2

**MORE LUMENS,  
HIGHER EFFICACY  
FEASIBLE DESIGN**



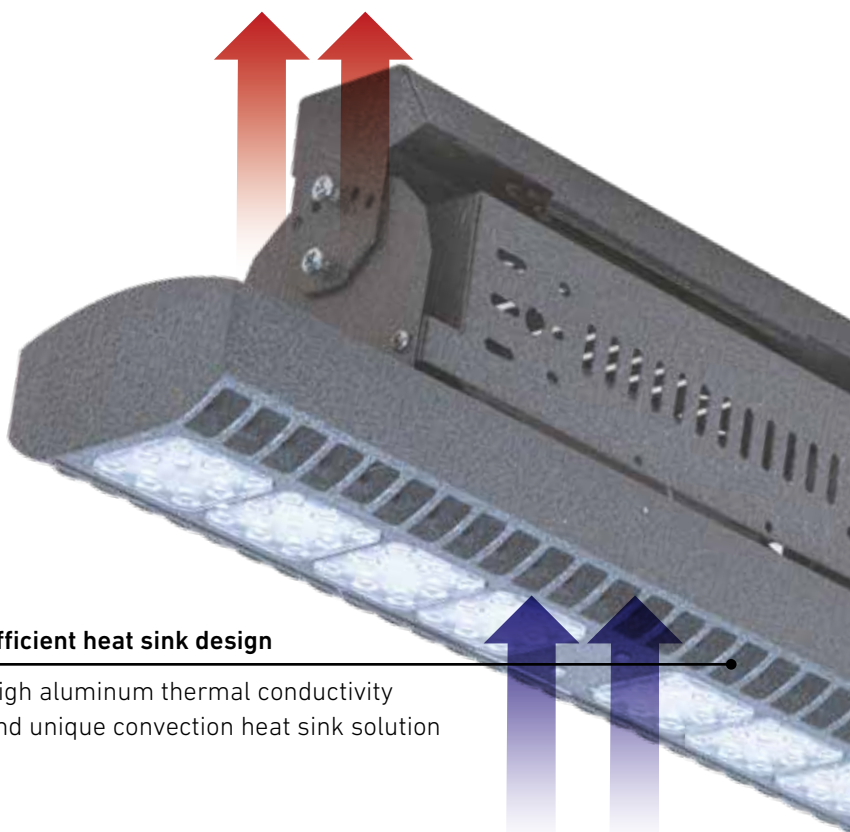


Robust and light housing made of die-cast aluminium. IP65, IK07

**CREE LED for industrial applications.  
Secondary optics of polycarbonate**

High energy efficiency and quality with a global name.  
Long service life and high-quality light.

CRI > 80



**Efficient heat sink design**

High aluminum thermal conductivity  
and unique convection heat sink solution





INDUSTRIAL

Modular design gives 3 types of construction:



65 W/100 W  
8200/12900 lm

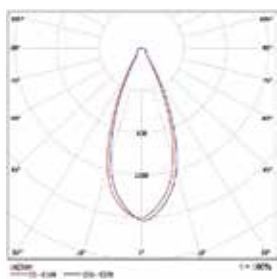


131/200 W  
16900/26000 lm

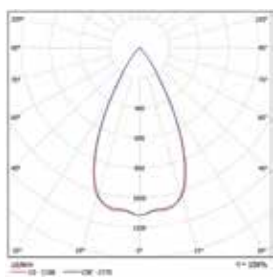


196 W  
26650 lm

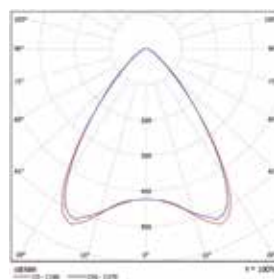
4 standard variant of symmetric light distribution:



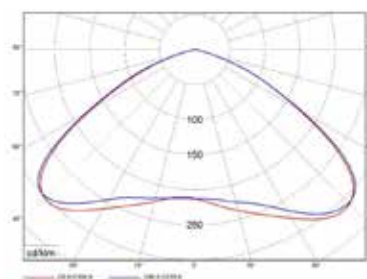
30°  
Illumination of premises with ceiling height from 15 to 25 m



60°  
Illumination of premises with ceiling height from 12 to 15 m

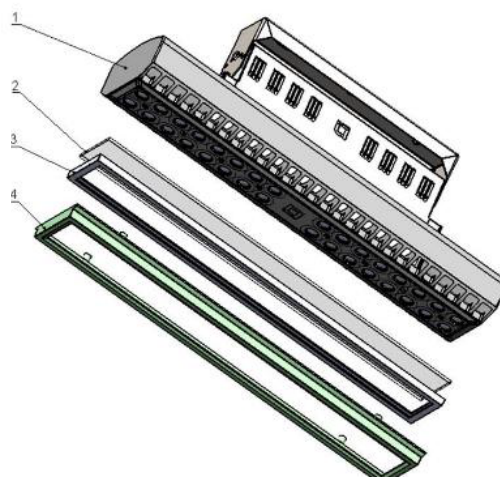
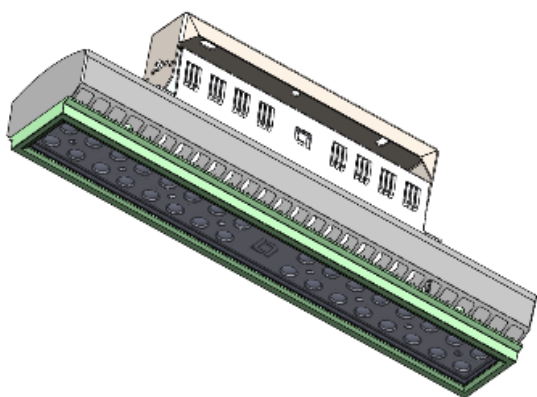


80°  
Illumination of premises with ceiling height from 8 to 12 m

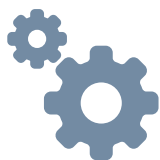


100°  
Illumination of premises with ceiling height from 6 to 8 m

Optional protective tempered glass allows to use luminaire in fire-hazardous areas and chemically aggressive environments:



- 1 – luminaire
- 2 – protective glass
- 3 – sealing gasket
- 4 – frame



## SPECIFICATIONS & USAGE

### INDUSTRIAL

- Lighting efficiency: up to 139 lm/W
- Colour temperature: 4000 K; 5000 K
- Color rendering index: 80
- Light housing weight and compact dimensions
- Modification with protective tempered glass (optional)
- AC/DC, possibility of connection to Central Emergency Lighting System, or Conversion kit Power led (external box).
- Ambient temperature -40 °C - +55 °C



For industrial premises in which fires fueled by dust or fibres are a possibility



Warehouse facilities



Industrial enterprises



Transport hubs (airports, bus stations, railway stations)



Malls



Sports halls

Order code	Name	Luminous flux, lm	Power consumption, W	lm/W	Weight, kg	PFC
1997031460	HB LED 75 D30 4000K G2 /E/	8500	65	131	3,5	≥ 0,96
1997031060	HB LED 75 D30 5000K G2 /E/	8900	65	134	3,5	≥ 0,96
1997031450	HB LED 75 D60 4000K G2 /E/	8200	65	126	3,5	≥ 0,96
1997031030	HB LED 75 D60 5000K G2 /E/	8400	65	129	3,5	≥ 0,96
1997031440	HB LED 75 D80 4000K G2 /E/	8600	65	132	3,5	≥ 0,96
1997031040	HB LED 75 D80 5000K G2 /E/	8600	65	132	3,5	≥ 0,96
1997935910	HB LED 75 D100 4000K G2/E/	8800	65	135	3,5	≥ 0,96
1997031610	HB LED 100 D30 4000K G2 /E/	12100	100	119	3,5	≥ 0,96
1997031090	HB LED 100 D30 5000K G2 /E/	12700	100	127	3,5	≥ 0,96
1997031600	HB LED 100 D60 4000K G2 /E/	12000	100	120	3,5	≥ 0,96
1997031080	HB LED 100 D60 5000K G2 /E/	12000	100	120	3,5	≥ 0,96
1997031590	HB LED 100 D80 4000K G2 /E/	12200	100	122	3,5	≥ 0,96
1997031070	HB LED 100 D80 5000K G2 /E/	12900	100	129	3,5	≥ 0,96
1997035920	HB LED 100 D100 4000K G2/E/	12800	100	128	3,5	≥ 0,96
1997031580	HB LED 150 D30 4000K G2 /E/	16900	131	129	7,0	≥ 0,96
1997031050	HB LED 150 D30 5000K G2 /E/	17700	131	135	7,0	≥ 0,96
1997031570	HB LED 150 D60 4000K G2 /E/	17000	131	130	7,0	≥ 0,96
1997031110	HB LED 150 D60 5000K G2 /E/	17700	131	135	7,0	≥ 0,96
1997031560	HB LED 150 D80 4000K G2 /E/	17300	131	131	7,0	≥ 0,96
1997031100	HB LED 150 D80 5000K G2 /E/	18100	131	139	7,0	≥ 0,96
1997935930	HB LED 150 D100 4000K G2/E/	17700	131	135	7,0	≥ 0,96
1997031540	HB LED 200 D30 4000K G2 /E/	24000	200	120	7,0	≥ 0,96
1997031140	HB LED 200 D30 5000K G2 /E/	25000	200	125	7,0	≥ 0,96
1997031550	HB LED 200 D60 4000K G2 /E/	24000	200	120	7,0	≥ 0,96
1997031130	HB LED 200 D60 5000K G2 /E/	25600	200	130	7,0	≥ 0,96
1997031530	HB LED 200 D80 4000K G2 /E/	24500	200	123	7,0	≥ 0,96
1997031120	HB LED 200 D80 5000K G2 /E/	26000	200	130	7,0	≥ 0,96
1997935940	HB LED 200 D100 4000K G2/E/	25200	200	126	7,0	≥ 0,96
1997031520	HB LED 225 D30 4000K G2 /E/	25600	196	130	11,5	≥ 0,96
1997031170	HB LED 225 D30 5000K G2 /E/	26600	196	136	11,5	≥ 0,96
1997031510	HB LED 225 D60 4000K G2 /E/	25800	196	132	11,5	≥ 0,96
1997031160	HB LED 225 D60 5000K G2 /E/	26500	196	135	11,5	≥ 0,96
1997031500	HB LED 225 D80 4000K G2 /E/	26000	196	133	11,5	≥ 0,96
1997031150	HB LED 225 D80 5000K G2 /E/	27100	196	138	11,5	≥ 0,96
1997935950	HB LED 225 D100 4000K G2/E/	26800	196	137	11,5	≥ 0,96